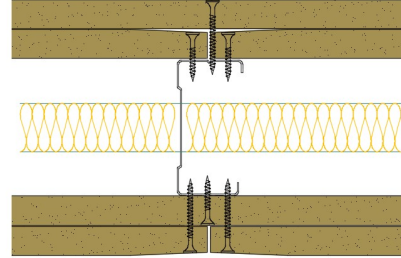


## 70-S-58(25) - SPEEDLINE System Data Sheet - Version V1 (24-10-23)

SPEEDLINE 70mm 'C' Stud Partition @600mm Ctrs,  
with 2x Siniat GTEC 15mm Standard Board each  
side, 25mm APR



### System Performance Breakdown

Fire Resistance:

BS476 Part 22:1987:

Test Ref & Date or Applied Ref & Report:

Max Height:

Thickness:

Duty Grade: BS 5234: Part 2:1992:

Sound Insulation:

**60/60 Minutes** (Integrity/Insulation).

- BRE Report P102396-1011C

Refer to Speedline Specification Clause

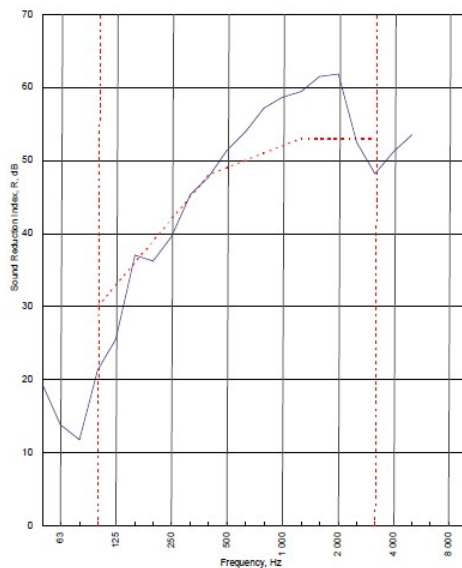
**132 mm.** (At Base Track, Excluding Finishes)

Severe - Annexes A-F

**49 R<sub>w</sub>dB**, Date Tested or Assessed Against - 70-S-57(25)

Test Code:	H17532AA
Test Date:	12/08/2011

Freq. Hz	R dB
50	19.4
63	13.8
80	11.8
100	21.4
125	25.6
160	37.0
200	36.2
250	39.5
315	45.3
400	47.7
500	51.4
630	54.0
800	57.2
1 000	58.7
1 250	59.4
1 600	61.5
2 000	61.9
2 500	52.5
3 150	48.2
4 000	51.3
5 000	53.5
6 300	
8 000	
10 000	



Rating according to BS EN ISO 717-1:1997	<b>R<sub>w</sub> (C;Ctr) = 49 (-3;-10) dB</b>		
Evaluation based on laboratory measurement results obtained by an engineering method.	Max dev. 8.6 dB at 100 Hz		
	C <sub>50-150</sub> = -7 dB	C <sub>50-500</sub> = -7 dB	C <sub>100-500</sub> = -2 dB
	C <sub>9,50-150</sub> = -18 dB	C <sub>9,50-500</sub> = -18 dB	C <sub>9,100-500</sub> = -10 dB

TESTED AT ONE OF THE UKAS ACCREDITED LABORATORIES BELOW

- B.T.C (H-Ref on Graph)
- B.R.E
- AIRO
- S.R.L

Customer: Metsec plc Hpec Division

BTC 17532A: Page 9 of 11

